



Nottingham
University Hospitals
NHS Trust

Introducing our Family Health Division #Team NUH



Divisional Leadership Team



Andrew Marshall
Divisional Director



Maggie McManus
Divisional General Manager

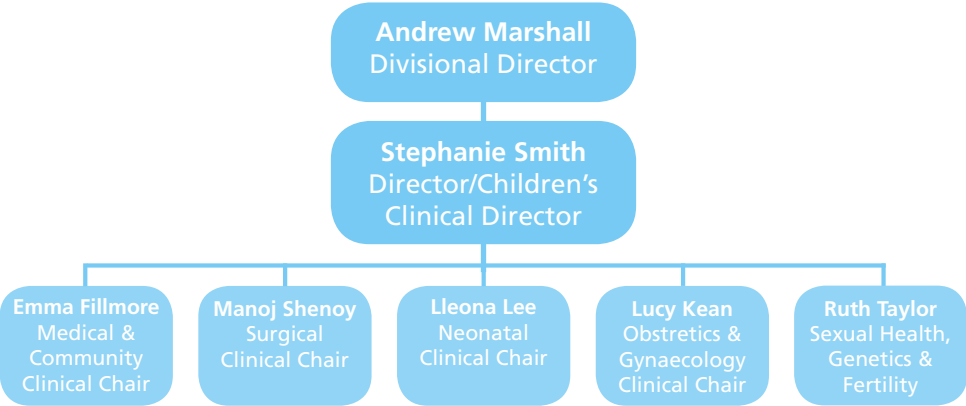


Lesley Reilly
Divisional Nurse



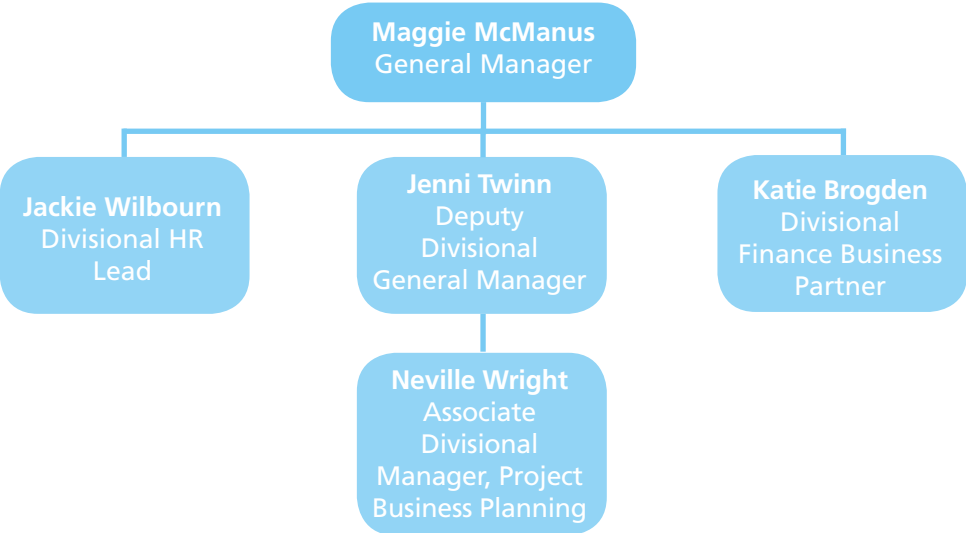
Joy Payne
Director of Midwifery

Divisional Director Management Structure



Divisional Heads of Service	
Dr Ajoy Sarkar	Genetics
Vacant	Fertility
Andree Ellis	Gynaecology
Lucy Kean	Obstetrics
Lleona Lee	Neonatal
Edna Ongosi	Community Paediatrics
Sophie Wilne	Paediatric Oncology
Louise Denvir	Paediatric Diabetes
Gabby Chow	Paediatric Neurology
Patrick Davies	Paediatric Intensive Care
Freda Hussain	Paediatric Nephrology
Davis Devadason	Paediatric Gastroenterology
Jason Neil-Dwyer	Cleft Lip & Palate
Manoj Shenoy	Paediatric Urology
Sandeep Motiwale	Paediatric Surgery
Louise Wells	General Paediatrics
Kishore Warrior	Paediatric Rheumatology
Jayesh Bhatt	Paediatric Respiratory
Pradip Thakker	Paediatric Cardiology
Jane Ravenscroft	Paediatric Dermatology

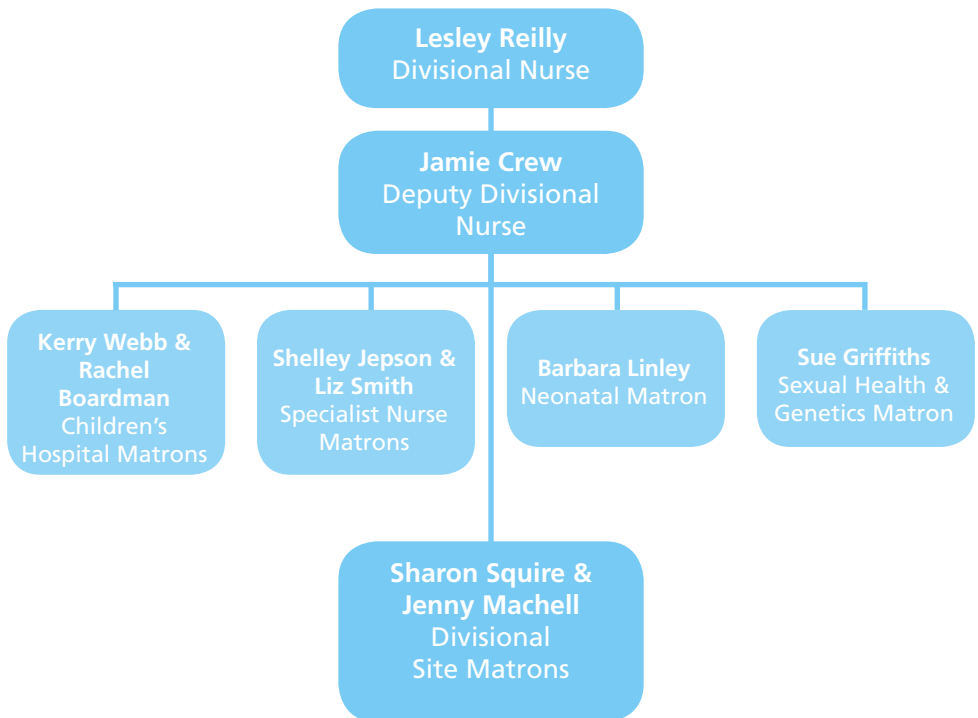
Divisional General Management Structure



Speciality General Managers	
Vacant	Children's Medical & Community
Jane Walker	Children's Surgical
Caroline Wilson - Acting	Neonatal
Caroline Wilson - Acting	Obstetrics & Gynaecology
Samantha Gamble	Sexual Health, Genetics & Fertility



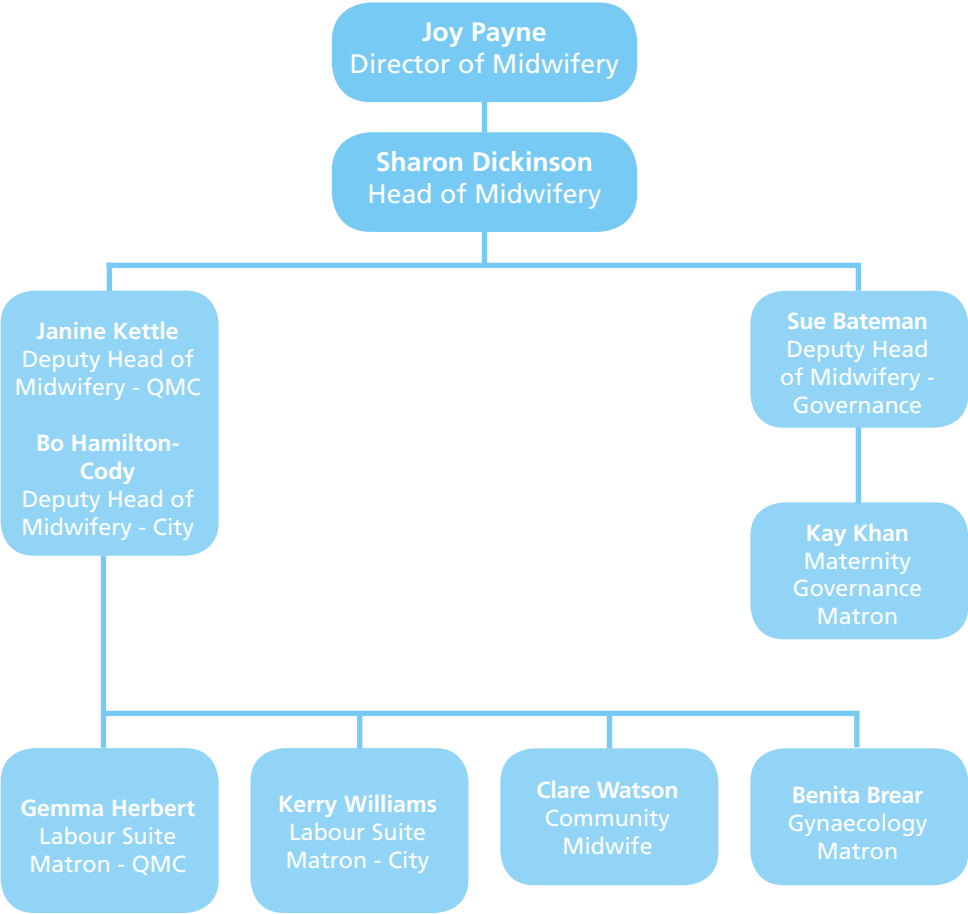
Nursing Leadership Structure





Jamie Crow
Deputy Head Nurse

Midwifery Leadership Structure





Family Health wards and specialties

Ward	Number of beds	Speciality	Ward Managers
D33	12	Respiratory & Diabetes	Jane Brookes
D34	16	EN /Orthopaedics & Spines/Cleft	Helen Donavon
D35	15	Gastroenterology/ Surgery	Rebecca Thurlow
E37	16	Assessment	Kelly Atkins
CAU	8	Assessment	Kelly Atkins
E39	15	Oncology/ Haematology	Katie Manning
E40	12	Neurology	Janet Hagen
PCCU	14	Intensive Care	Sue Mager
E17	10	Renal/Nephrology	Michelle Kirkland
AMBC	12	Ambulatory Care	RebeccaThurlow
B26	18	Antenatal	D Raynor
C29	26	Post natal	E Matcalf
NICU QMC	17	Neonatal	L Collins
NICU City	18	Neonatal	C Griffiths
Loxley	20	Gynaecology	D Raffle
Lawrence	27	Maternity	
Bonnington	27	Maternity	P Bahra
A23	16	Gynaecology	S Kordula

Nottingham Children's Hospital

The Nottingham Children's Hospital covers many specialities across 14 wards and departments, some of which are tertiary services and some supraregional. We currently work as two Clinical Service Units (CSU), each with a triumvirate of a Clinical Consultant as the Chair, supported by a Matron and a Speciality General Manager.

The Medical and Community Paediatric Service is responsible for wards D33, E37, CAU, E39, E40, PCCU, Day Care, the Sexual Assault Service, Children's Development Centre and the Community clinics. The specialities are; Respiratory, Cystic Fibrosis, Diabetes, Endocrine, Metabolic, Allergy, Immunology, HIV, Eating disorders, General Medical, Oncology, Haematology, Rheumatology, Neurology, Neuro-oncology, Epilepsy, PICU, PHDU, Major Trauma, Long-term ventilation, ADHD and Autism. The CSU also works closely with and provides beds for CAMHS, Neurosurgical and Neuro-rehabilitation patients.

The Surgical paediatric service is responsible for wards D34, D35, E17, Ambulatory Care Unit, Day Case Surgical Unit, Children's Outpatients Department; the specialities are; General Surgery, Cleft services, Gastroenterology, Stoma, Renal, Nephrology and Haemodialysis. The CSU also works closely with and provides beds for ENT, Spinal, and Orthopaedic patients.

In addition we run many outreach clinics and support our local District General Hospitals. We have a retrieval service for the transport of the deteriorating child, hosted by University Hospitals of Leicester NHS Trust.

Achievements

- Clinical research team have recently published a tool for mental health assessments in children and young people that is gaining national and international acclaim
- Parent Accommodation is being renovated to provide a more welcoming environment for parent of children receiving treatment in the hospital, to enable them to be near their child at all times
- Plans for new children's brain tumour facility at Nottingham Children's Hospital
- Paediatric Critical Care Team are in place for the winter months to provide critical care outreach across the wards
- Our nurses presented at the ANCC Magnet conference in Denver this year which is the first time that a team from the UK has ever been asked to present.



A Guide to our Paediatric wards and services

D33

This ward focus' on children with Respiratory and Diabetic needs. They assist children who are newly diagnosed with Type 1 Diabetes with regards to the transition of monitoring their blood glucose levels, as well as helping them with their ongoing care.

D34

Ward D34 covers Ear Eyes Nose and Throat cases (ENT), including grommets, hearing aids, etc. They also cover Orthopaedic & Trauma cases which includes spinal scoliosis operations, as well as Cleft Lip Palate correctional operations.

D35

This ward caters for the children who are under General Surgery (pre & post op), as well as children requiring Gastroenterology procedures.

E37 & CAU

These two wards cover patients for Children Assessments. These assessments relate the child's upcoming surgical procedures.

E39

The children who are based on this ward require Oncology and Haemodialysis care and treatment. This includes children with poorly functioning kidneys who require regular dialysis appointments.

E40

E40 is the Neurology ward. This means it caters for children with brain or head injuries.

PCCU

Paediatric Critical Care Unit. This ward caters for patients who have either complex/multiple needs, are gravely ill or recovering from a very complex operation i.e. spinal correction surgery (scoliosis).

E17

This ward links in with E37, as it caters for children with Renal and/or Nephrology ailments.



Dr Charlotte Goedvolk
Consultant PICU



AMBC

The Children's Ambulatory Care Unit is a day case area. We have eight reclining chairs and one bed and we look after children requiring day case elective procedures. We have another unit which is called the Children's Surgical Day Case Unit.

Patients are admitted in the morning and afternoon for surgery or investigations such as MRI scans under general anaesthetic/sedation and are discharged primarily by the nursing staff.

Specialities that we take care of include:

- General paediatric surgery
- Urology
- Ear Nose and Throat
- Ophthalmics
- Gastroenterology
- Gynaecology
- Dermatology
- Rheumatology
- Burns and Plastics
- Maxillofacial

- Dental
- Orthopaedics
- A variety of medical/gastroenterology and neurology patients for scans/investigations

We also have a number of children coming to the ward for medical treatments. We have regular patients coming for Infliximab infusions (to treat Crohn's and Ulcerative Colitis), and other children coming for food allergy challenges, trial doses of medications and other medical tests/investigations.

Cleft Lip and Palate

NUH is the regional cleft lip and palate centre for the East Midlands, East of England and Southern Yorkshire regions. The team consists of maxilla facial surgeons, plastic surgeons, ENT surgeons, orthodontists, paediatric dentists, speech and language therapists and nurse specialists in cleft lip and palate.

SARC – Sexual Assault Regional Centre

Since April 1st 2018 the East Midlands Children's and Young People sexual assault service has provided holistic care to anyone under the age of 18 and adults with significant learning difficulties after a sexual assault or sexual abuse. NUH has a brand new Paediatric Forensic suite and the feedback we have received from children and young people and that access the service has been extremely positive.

Renal

Regional renal hub for East Mids, East England and South Yorkshire. Looking after children with end stage renal failure carrying out dialysis and if required transplant.

Paediatric Diabetes

The team provide a nationally acclaimed service which has the best HBA1C results in children and young people (marker of diabetes control) in the country.

Community Paediatrics

Integrated service between primary and secondary care with dedicated consultants available by phone offering advice to GPs in the management of patients to provide excellent care and avoid admissions to emergency care.

Gastroenterology

NUH has a nationally renowned service which provides treatment for children and young people with eating disorders.

Dermatology

The Dermatology service is an integrated paediatric general and dermatology service which has been recognised by a BMJ award commendation for the success of integrated services.



Paediatric Critical Care Unit

NUH delivers paediatric care for the QMC and is one of only two units in the East Midlands Region.

The trust overarching strategy is to maintain PCCU services for the east midlands region and has embarked upon a joint transport and retrieval service for critically unwell children in partnership with University Hospitals of Leicester. As a result the PCCU in Nottingham is providing essential care for increasing numbers of children from outside of the East Midlands.

The Paediatric critical care service looks after children who have conditions that are life threatening and need constant close monitoring and support by highly trained consultants and specialist teams. The unit integrates paediatric intensive care (ICU) and paediatric high dependency (HDU) with 10 beds in ICU and 8 in HDU.

Nottingham Neonatal Service

The Nottingham Neonatal Service provides care for over 9,000 Nottingham births per year and those babies and families transferred in from other hospitals within the East Midlands Neonatal Operational Delivery Network (EMNODN) who need specialist care. This includes medical and surgical intensive care, high dependency care and low dependency care on the neonatal units, as well as care for well and 'transitional care babies on the post-natal wards with routine newborn checks on all babies and community care by our continuing care team.

NUH Neonatal Service is the tertiary neonatal intensive care centre for the North Hub of the EMNODN, which is comprised of the units across Nottingham, Derby, Burton, Mansfield, Lincoln and Boston serving a population of approximately 23,000 births each year. As with all neonatal care in the UK, care is centralised within the network so that the care of the smallest and sickest babies and those with surgical problems all occurs at NUH.

There are two Neonatal intensive care units within NUH, one on each campus (QMC and City). Although the service is based on two sites with intensive care provided at both campuses, it runs as one service. Both units admit around 450 babies each per year and complete over 3600 intensive care days.

The Service also provides the regional neonatal surgical service.

The Neonatal Intensive Care Unit at QMC comprises 17 cots; it is linked with the fetal medicine service and provides all of the neonatal surgery, including subspecialty work such as ENT and Neurosurgery and laser therapy for retinopathy of prematurity. The medical teams work in close liaison with the paediatric surgical services provided at QMC. Nottingham neonatal services provide intensive care for newborn babies within the quaternary renal service

The Neonatal Intensive Care Unit at City Campus also comprises 18 cots and provides a full range of intensive care for medical babies. Babies with surgical problems are transferred to QMC.

The Service is supported by pharmacy, dietetics, physiotherapy, clinical psychology, paediatric radiology and neuro-radiology services and has access to the full range of paediatric specialist opinion.

Activities between the two units are organised on a "whole service" basis including junior doctors' training, neonatal educational meetings, clinical policy and guidelines, audit, clinical research and clinical governance. There are joint guidelines, educational programmes, induction programmes

and a clinical governance structure co-ordinated across the two campuses. There is a single matron and medical service lead for both sites.

The Service has an excellent academic reputation with ongoing research and both leads on and is involved in a number of multi-centre trials.

Transport:

Transport for babies across the EMNODN is provided by the CenTre Neonatal Transport service which provides a service across EMNODN. This service is jointly based in both Nottingham and Leicester with transport teams based in both places to provide optimal support for both the North and South areas of East Midlands.

Outpatient Follow Up:

Children who are born before 30 weeks, with birthweight <1000g or who have neonatal encephalopathy are routinely reviewed as part of our follow up service until they are 24 months corrected age.

Team work

- We are a hard working multidisciplinary team
- We have the support of dedicated neonatal dieticians, physiotherapists, neonatal pharmacists and parenteral pharmacists
- We are proud to have recently appointed a clinical psychologist and bereavement nurses to provide support to our families and staff
- We work closely with and, as consultants, are part of the CenTre transport team.

Outcomes

- From the most recent MBBRACE report, our mortality rates are in the “up to 10% lower than expected” category
- Our infection data for 2017 shows that of all units inputting 100% of data, we are ranked 3rd out of 19 units with similar activity, with a below average rate of infections per 1000 line days.

National agendas and shared governance

- We work closely with our neonatal network actively attending meetings and supporting working groups such as governance and mortality.

Families

- Our Family and Friends Test show that 100% of our parents who complete this would recommend us.

Safety

- We have recently introduced Drug Error Reducing Software in our iv infusion pumps for all of our intravenous infusions.



Maternity

The Maternity Service is a large united service based across two campuses and Nottinghamshire community delivering approximately 9000 women each year. Birth choices in Nottingham include home birth, midwifery led births in along-side units on both campuses and birth in the consultant led units on each campus. There is a dedicated obstetric anaesthetic rota at consultant level provided to both consultant-led units.

Specialised services include tertiary cardiac, renal, respiratory, endocrine, hypertension, HIV, nephrology services, with a dedicated maternal medicine physician clinic to serve women with rare problems. Specialised clinics serve the local population for pre-term birth, multiple pregnancy, growth restriction, obesity and perinatal mental health, teenage pregnancy and drug and alcohol misuse. These services are supported by specialist midwives.

Nottingham is one of two recognised tertiary referral fetal medicine centres in the East Midlands, serving the North of the county and offering a fetal transfusion service across the whole region.

Specialist midwifery services also include asylum seekers and refugees, homeless women, women who have undergone female genital mutilation.

NUH maternity is a major contributor to the research portfolio for NUH and the University of Nottingham, holding large grants for the investigation of a number of key issues in pregnancy, including pre-eclampsia and maternal age.

Nottingham has a national reputation for the provision of “gentle caesarean section” should women wish this.

Achievements

- NMPA data: Significant reduction in 3rd and 4th degree tears across NUH.
- In September we reported that the Community team are now delivering Antenatal continuity of carer by named midwife to 77% of the women we care for (the highest we have achieved to date!) and by team 96% of our women are receiving continuity
- In July we re-launched home birth within community midwifery in line with NHS70

Bereavement Service

Our bereavement midwife service offers practical and emotional support in the hospital, at home or in the Zephyrs centre, as space dedicated to helping support bereaved families away from the clinical environment.

AT NUH there is also a serenity suite at both hospitals which is a dedicated bereavement room that you can spend time in with your baby making precious memories.

The bereavement midwife can also offer support to those after a loss that may be anxious about a future pregnancy

Partner Stay Over facility

In response to CQC Picker survey feedback the units are trialling the use of recliner chairs to allow partners or companions of women to stay overnight and assist with caring for the woman and new baby. Funding was provided for these chairs from charitable donations. This initiative reduced the number of complaints in maternity about partners or companions not being allowed to stay on the ward overnight.

Whose Shoes

This is a practical tool to help the NHS and others move on from the 'bigger picture' or 'vision' for health and social care transformation in maternity to what it really means for individuals and services. It is a board game that offers a bespoke approach working with services to breakdown barriers and engage with people in order to achieve the outcomes they want. Our recent event brought together a large number of service users, staff and various others from the voluntary organisations and stakeholders

Picker Survey 2018

NUH was ranked 4th out of 69 picker trusts for improvements in overall positive scores from 2017-2018. Significant areas that we improved were:

- Antenatal care concentrating women's emotional wellbeing which improved from 88% to 94%
- 100% of women told us that they were treated with respect and dignity during labour and birth
- Women's satisfaction with support and advice regarding feeding their baby out of hours increased from 80% to 91%



Gynaecology

The Gynaecology Service cares for women at both City (elective) and QMC (emergency). The service provides a range of secondary, tertiary and national services to the East Midlands region that includes Paediatric Gynaecology, gynaecology, Uro-gynaecology, vulval disorders and recurrent miscarriage management. As part of the national cervical screening service we provide Colposcopy services and outpatient cervical disease treatment and monitoring, outpatient hysteroscopy for endometrial conditions at the Women's Unit at the City Campus.

The urogynaecology service is the only nationally accredited service in the East Midlands. The research portfolio includes a range of local national and international trials. The emergency service, located at the QMC campus is one of the busiest in the country offering day unit management for a range of gynaecological conditions including miscarriage.

Achievements

- Truclear starts in Women's Unit 8th November offering a wider range of outpatient procedures for women
- Development of outpatient Truclear service to reduce the need for general anaesthetic surgery
- Enhanced manual vacuum aspiration service, to enable management of miscarriage on an outpatient basis



Integrated Sexual Health (ISHS)

ISHS offer contraception, STI, HIV and psychosexual health care to over 40,000 people per year, mainly from the Nottingham City and County areas. We see anyone aged over 13, and are an open-access service for most aspects of care.

We are based in two main Hubs - one at City, and one at Victoria Health Centre and clinics run in various venues Monday -Thursday 9-7, Friday 9-5 and Saturday 10-2. Contraceptive/STI Clinics also operate at over 20 spokes throughout the city and southern county boroughs within the community setting and are mainly based in health centres. Our health promotion and outreach team provide training and basic sexual health care within a number of colleges, PRU's (Pupil Referral Units), schools and other venues in the same catchment area, as well as 'pop-up' events such as Fresher's week. We also provide HIV and STI care in 3 local prisons - Lowdham, Nottingham and Ranby.

HIV outpatient care is based at the City's Hub, with in-patient HIV care delivered in Nightingale 2 ward. We are a specialist level HIV service provider, and as such offer 24/7 access to medical on-call consultant advice for HIV related conditions, as well as specialist HIV pharmacist, counselling and dietetics support. We lead the Mid Trent HIV Network, which also includes Derby and Sherwood Forest Hospitals HIV services.

Psychosexual care is also based at the City, in the Chandos Unit. Specialist care is provided by psychosexual therapists consultant and nurse specialist, referrals are received from a wider geographical area.

Genetics Services

The Genetics Service consists of clinical, laboratory and research facilities funded by the NHS. Genetics services are provided to the East Midlands, with a total population of around 2.3 million, in which there are approximately 20,000 births per year.

The Department of Clinical Genetics is located in on the City Hospital Campus adjacent to the laboratories. The clinical genetics team consist of consultants, StRs and genetics nurse/counsellors based in Nottingham who have their own independent caseload as well as supporting the work of consultant staff. The team of clinicians are supported by a Genetics information nurse and an administrative team led by an operational services and an admin manager. The Genetic Counsellors have a Team Leader, who works in close collaboration with the Head of Service.

The Clinical Department provides a comprehensive Clinical Genetics service to Nottinghamshire, South Derbyshire and much of Lincolnshire. Peripheral clinics are held on a regular basis in Derby, Mansfield, Boston, Spalding, Lincoln, Louth, Skegness and Grantham. Special interest clinics presently include a nationally commissioned Ataxia

Telangiectasia clinic, Inherited Cardiac Conditions Clinic, Neurofibromatosis type 2, Endocrine and Disorders of Sexual Differentiation, Community Paediatrics, Adult Learning Disabilities and Autism, Lymphoedema and the Skeletal Dysplasia Clinic. Recently a joint Renal Clinic, Dermatology Clinic and Ophthalmology Clinic have also been set up.

The Cytogenetics and Molecular Laboratories are based in purpose built accommodation. Together these provide comprehensive genetic laboratory services to services in the East Midlands, including some services to Leicester. The cytogenetic laboratory offer array CGH in addition to other standard techniques. The Molecular Genetics laboratory provides a molecular diagnostic service for a wide range of conditions using standard techniques and Next Generation Sequencing. Both laboratories have accredited training programmes and are UKAS accredited. There is a joint monthly seminar programme for all three departments.

The Clinical and Laboratory services have been instrumental in delivering national research and service transformation projects like The Deciphering Developmental Disorders Study and The 100,000 genomes project.

Fertility Services

The Fertility Team offers a wide range of services from diagnostics and treatment to counselling and support for both NHS and privately-funded patients from Nottinghamshire and surrounding counties. The laboratory also supports local regional oncology and haematology teams with fertility preservation service aimed at men undergoing cancer treatments.

We see some 600 new couples per year and offer 1st line treatments either using partner or donor sperm with those needing more complex treatment such as IVF being given the choice of two local private providers. We provide impartial and expert guidance through the fertility treatment process and our patients have the assurance that we are committed to safety, quality and ethical conduct as set out by the Human Fertilisation and Embryology Association. The service also has strong links with education and a commitment to research and innovation.





Designed by NUH Communications Team, November 2018.
©Nottingham University hospitals NHS Trust. All rights reserved.